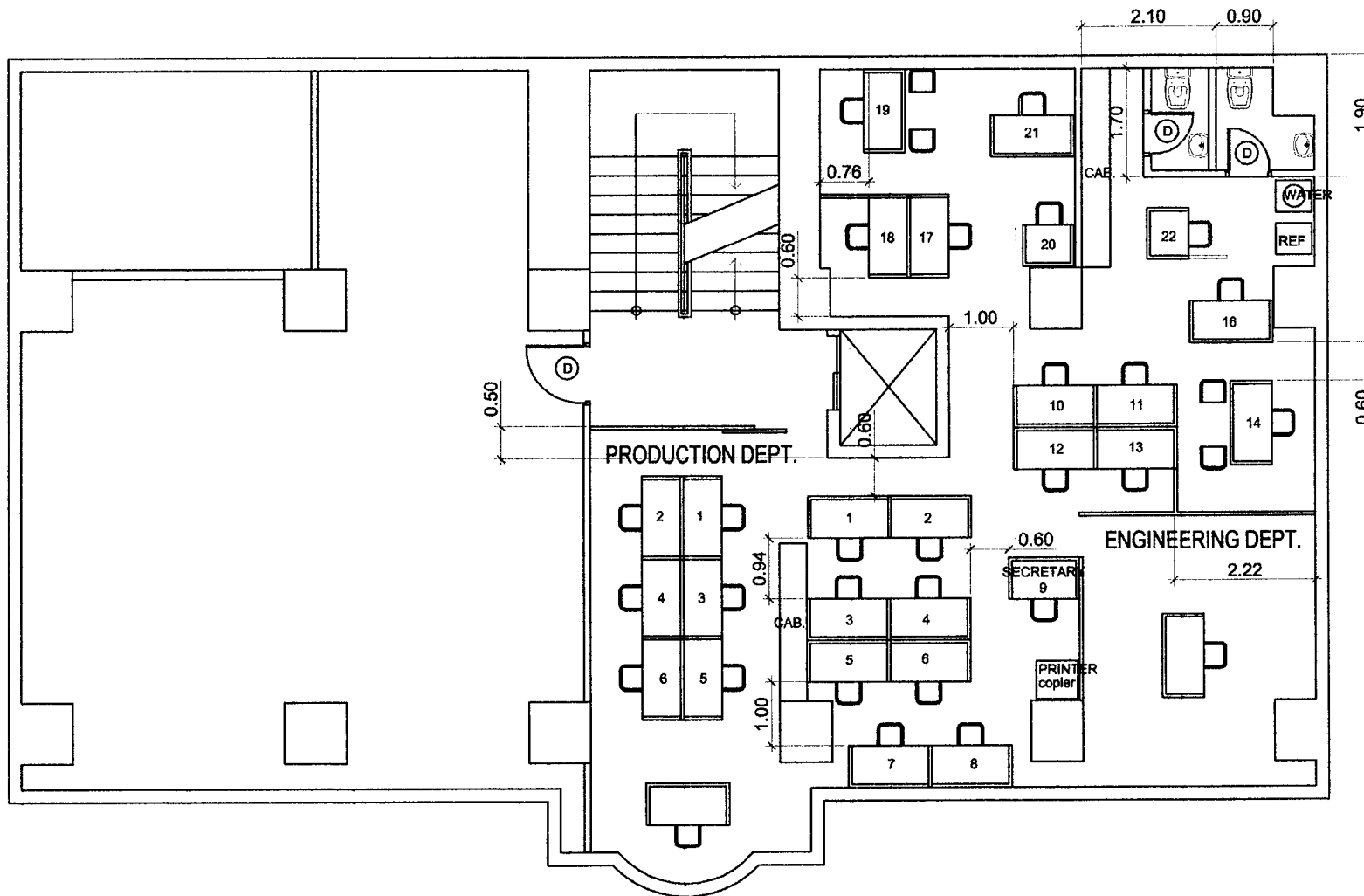


This design or drawing is the sole property of Calamba Water District. No part of this design or drawing may be reproduced or transmitted in any form or by any means without the written consent of its owner.



### FOURTH FLOOR PLAN

SCALE

1:100 m.



**CALAMBA WATER DISTRICT**  
ENGINEERING DEPARTMENT  
PLANNING AND DESIGN DIVISION

247 Public Service

LAKEVIEW SUBD., HALANG, CALAMBA CITY

PROJECT TITLE:

PROPOSED: MULTIPLE OFFICE  
MODULAR PARTITION

LOCATION:

CALAMBA CITY

DRAWN BY:

A. DEL PRADO

DESIGNED BY:

ENGR. J. GILLERA

CHECKED BY:

ENGR. J. GILLERA

RECOMMENDED BY:

ENGR. J. GILLERA

APPROVED BY:

MR. E. A. AGUILAR JR.

SHEET CONTENTS:

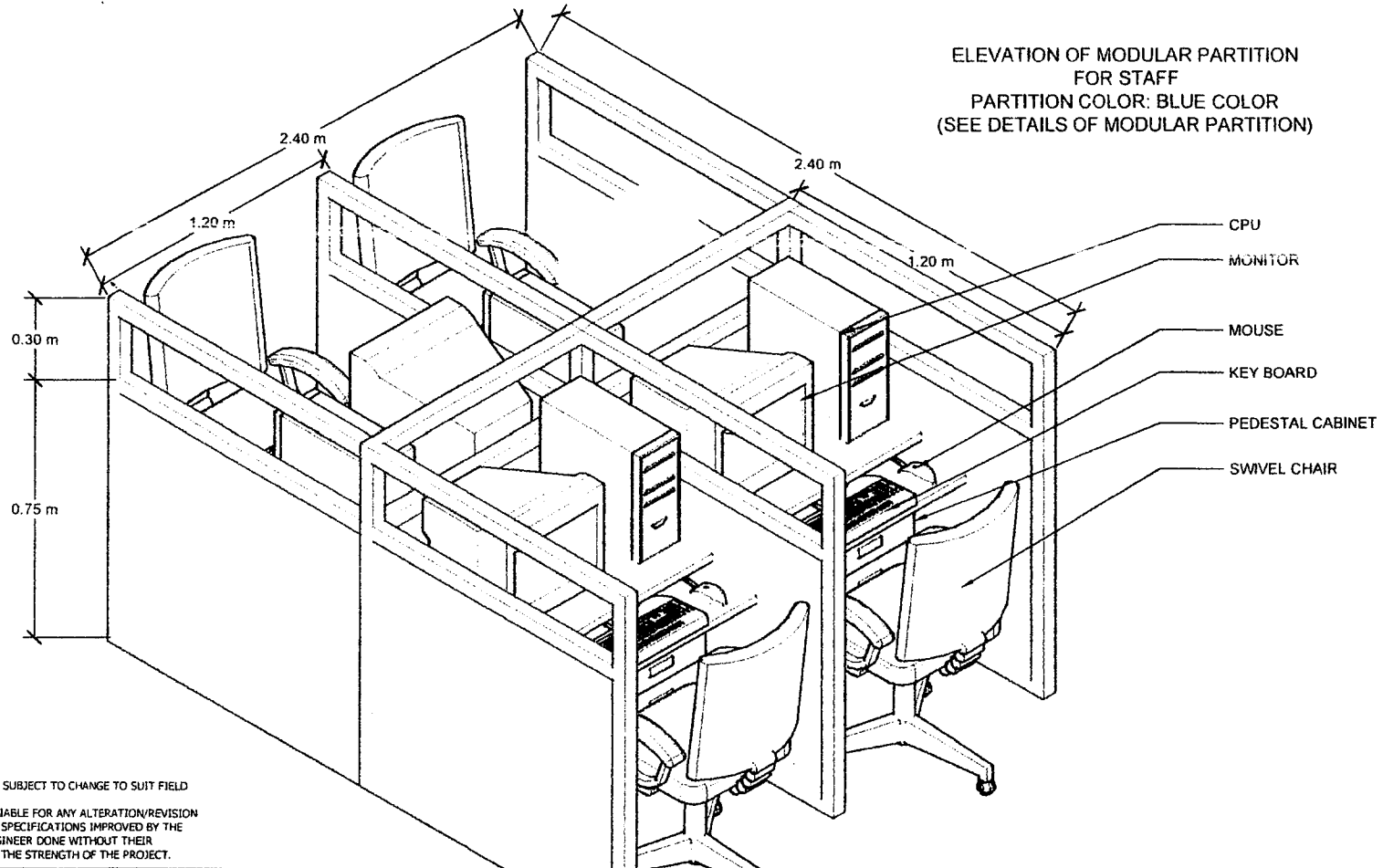
PERSPECTIVE

DATE:

SHEET NO.


1

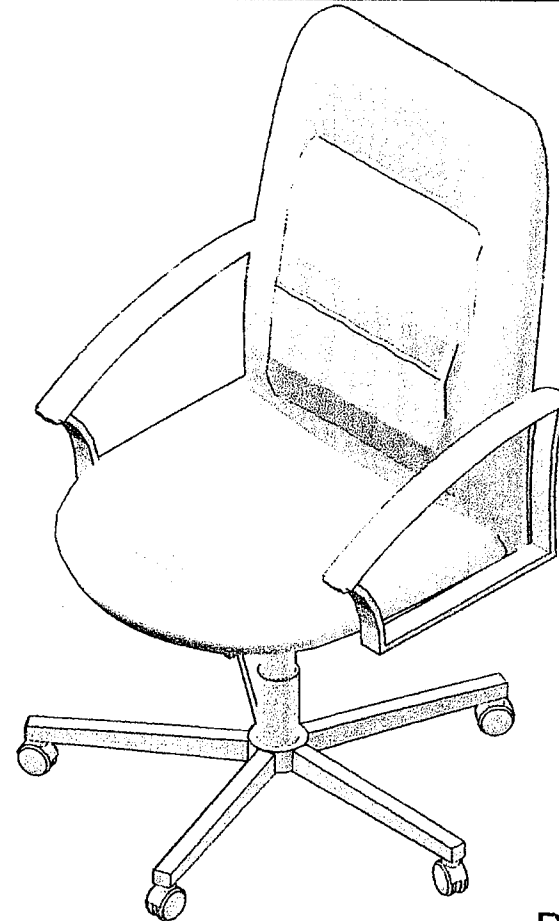
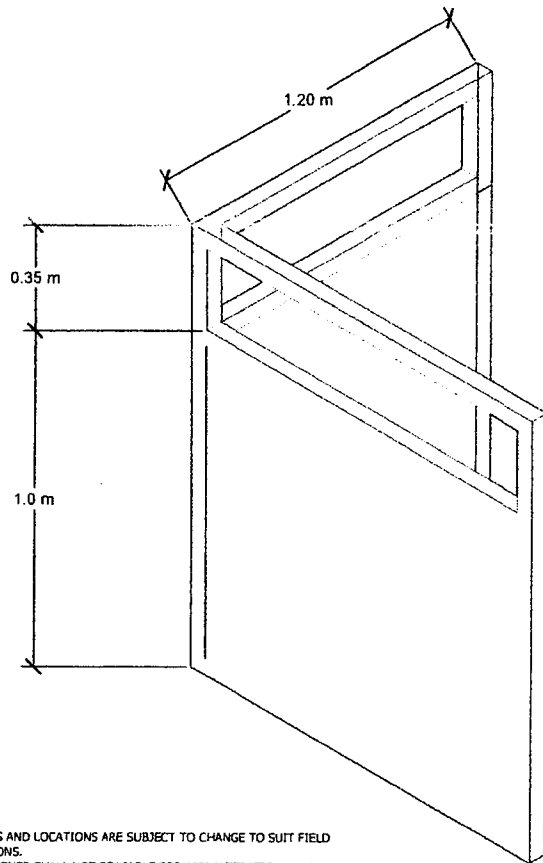
ELEVATION OF MODULAR PARTITION  
FOR STAFF  
PARTITION COLOR: BLUE COLOR  
(SEE DETAILS OF MODULAR PARTITION)



NOTES:

1. ALL SIZES AND LOCATIONS ARE SUBJECT TO CHANGE TO SUIT FIELD CONDITIONS.
2. THE DESIGNER SHALL NOT BE LIABLE FOR ANY ALTERATION/REVISION ON THE PLANS/DRAWINGS AND SPECIFICATIONS IMPROVED BY THE AUTHORIZED SUPERVISING ENGINEER DONE WITHOUT THEIR KNOWLEDGE THAT MAY IMPAIR THE STRENGTH OF THE PROJECT.

 <p><b>CALAMBA WATER DISTRICT</b> ENGINEERING DEPARTMENT PLANNING AND DESIGN DIVISION <small>LAKEVIEW SUBD., HALANG, CALAMBA CITY</small></p>	PROJECT TITLE:	AUTOCAD BY: ENGR. K. CERVANCIA	SHEET CONTENTS:	DATE:
	MODULAR PARTITION ENGINEERING AND PRODUCTION	DESIGNED BY: ENGR. K. CERVANCIA	STAFF PARTITION	9/28/2016
	LOCATION:	CHECKED BY: ENGR. R.S. CARTAGO		SHEET NO.
	CALAMBA CITY, LAGUNA	RECOMMENDED BY: ENGR. R.S. CARTAGO		3
	APPROVED BY: ENGR. R.B. SUMANGA			



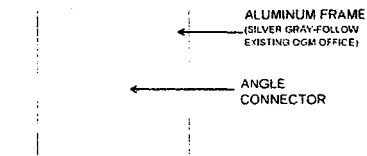
HIGH BACK CHAIR WITH ARMS  
 -PNEUMATIC LIFT;360° SWIVEL  
 -RECLINE/ TILT MECHANISM  
 -FABRIC FINISH BACK & SEAT  
 -NYLON STAR BASE WITH CASTER  
 QUANTITY: 2 (TWO) PCS.

**PERSPECTIVE**

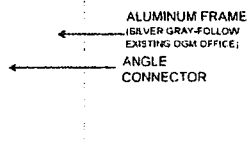
**NOTES:**

1. ALL SIZES AND LOCATIONS ARE SUBJECT TO CHANGE TO SUIT FIELD CONDITIONS.
2. THE DESIGNER SHALL NOT BE LIABLE FOR ANY ALTERATION/REVISION ON THE PLANS/DRAWINGS AND SPECIFICATIONS IMPROVED BY THE AUTHORIZED SUPERVISING ENGINEER DONE WITHOUT THEIR KNOWLEDGE THAT MAY IMPAIR THE STRENGTH OF THE PROJECT.

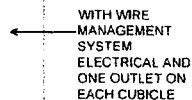
	PROJECT TITLE:	AUTOCAD BY: ENGR. K. CERVANCIA	SHEET CONTENTS:	DATE:
	MODULAR PARTITION ENGINEERING AND PRODUCTION	DESIGNED BY: ENGR. K. CERVANCIA	MANAGER PARTITION DETAILS	9/28/2016
	LOCATION:	CHECKED BY: ENGR. R.S. CARTAGO		SHEET NO.
	CALAMBA CITY, LAGUNA	RECOMMENDED BY: ENGR. R.S. CARTAGO		4
	APPROVED BY: ENGR. R.B. SUMANGA			



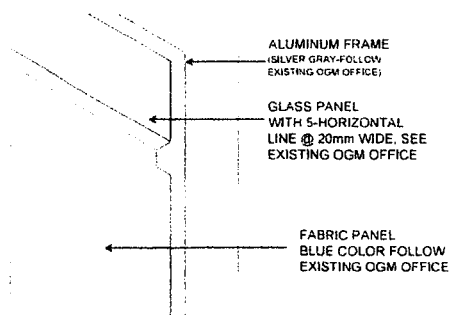
ANGLE CONNECTOR FOR 3-WAY CONNECTIONS



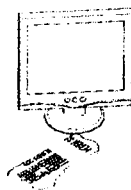
ANGLE CONNECTOR FOR 4-WAY CONNECTIONS



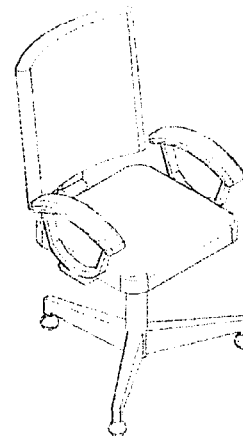
FLOOR PANEL CONNECTION



FABRIC PARTITION 1m(H) WITH TOP GLASS PANEL 0.35m(H), MONOTONE SILVER GRAY (SEE PLAN FOR SIZES)

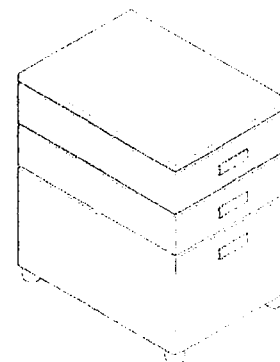


FREESTANDING TABLE 25MM THICK & MOUNTABLE BLUE COLOR FOLLOW EXISTING OGM OFFICE LEGS VARIABLE WIDTH 60CM(D)



TASK CHAIR WITH ARMS  
-PNEUMATIC LIFT -NORMAL TILT  
-FABRIC FINISH  
-BACK & SEAT  
-5-PRONGED STAR  
-NYLON BASE

STAFF CHAIR  
QUANTITY : 21 PCS



3 DRAWER  
-MOBILE PEDESTAL  
-STEEL BALL BEARING MECHANISM  
-LOCK  
-ONE LOCK ALL DRAWER  
-POWDER COATED  
-OFFWHITE FINISH  
-ED GAUGE # 20  
-W40 D56 H65 Cm

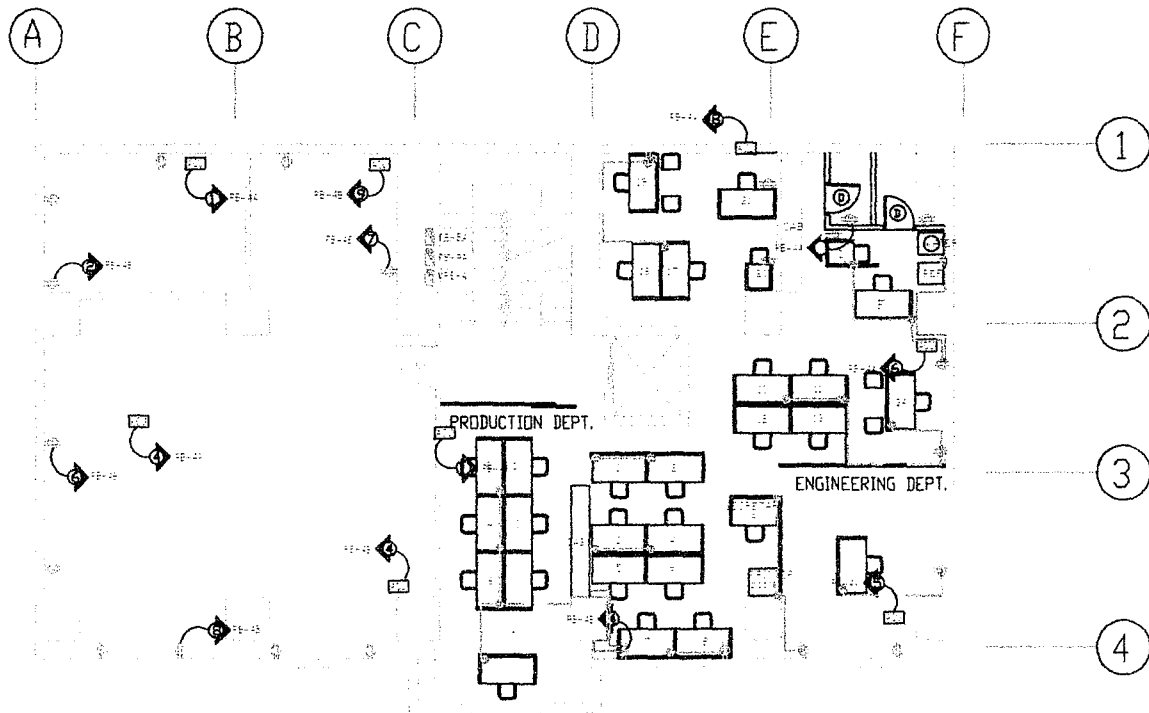
PEDESTAL CABINET DETAILS  
QUANTITY 23 PCS

- NOTES:
1. ALL SIZES AND LOCATIONS ARE SUBJECT TO CHANGE TO SUIT FIELD CONDITIONS.
  2. THE DESIGNER SHALL NOT BE LIABLE FOR ANY ALTERATION/REVISION ON THE PLANS/DRAWINGS AND SPECIFICATIONS IMPROVED BY THE AUTHORIZED SUPERVISING ENGINEER DONE WITHOUT THEIR KNOWLEDGE THAT MAY IMPAIR THE STRENGTH OF THE PROJECT.

**CALAMBA WATER DISTRICT**  
ENGINEERING DEPARTMENT  
PLANNING AND DESIGN DIVISION  
LAKEVIEW SUBD., HALANG, CALAMBA CITY

PROJECT TITLE:	AUTOCAD BY: ENGR. K. CERVANCIA	SHEET CONTENTS:	DATE:
MODULAR PARTITION ENGINEERING AND PRODUCTION	DESIGNED BY: ENGR. K. CERVANCIA	MANAGER PARTITION DETAILS	9/28/2016
LOCATION:	CHECKED BY: ENGR. R.S. CARTAGO		SHEET NO.
CALAMBA CITY, LAGUNA	RECOMMENDED BY: ENGR. R.S. CARTAGO		5
	APPROVED BY: ENGR. R.B. SUMANGA		

The design of this drawing is the property of the designer and shall not be reproduced or transmitted in any form or by any means, without the written consent of the designer.



- LEGEND:**
- CIRCUIT HOMERUN
  - PANEL BOARD
  - ACU OUTLET
  - CONVENIENCE OUTLET (2 G)
  - CONVENIENCE OUTLET (2 G for Air Blower)
  - SURFACE CONVENIENCE OUTLET
  - 2-3.5mm THHN EXTENSION

**ELECTRICAL POWER LAY-OUT  
FOURTH FLOOR**

- NOTES:**
1. ALL SIZES AND LOCATIONS ARE SUBJECT TO CHANGE TO SUIT FIELD CONDITIONS.
  2. THE DESIGNER SHALL NOT BE LIABLE FOR ANY ALTERATION/REVISION ON THE PLANS/DRAWINGS AND SPECIFICATIONS IMPROVED BY THE AUTHORIZED SUPERVISING ENGINEER DONE WITHOUT THEIR KNOWLEDGE THAT MAY IMPAIR THE STRENGTH OF THE PROJECT.



**CALAMBA WATER DISTRICT**  
 ENGINEERING DEPARTMENT  
 PLANNING AND DESIGN DIVISION

PROJECT TITLE  
**Proposed Modular Partition**

LAKEVIEW SUBD., HALANG, CALAMBA CITY

DESIGNED BY: MR. A. L. DEL PRADO  
 CHECKED BY: MR. A. M. MANDANAS JR.  
 DRAWN BY: ENGR R. A. CAPITALE  
 REVISIONS BY: ENGR R. S. CARTAGO  
 APPROVED BY: MR. EXEQUIEL A. AGUILAR JR.

SHEET NUMBER: \_\_\_\_\_ DATE: \_\_\_\_\_  
 SHEET: \_\_\_\_\_ OF \_\_\_\_\_  
 SHEET: \_\_\_\_\_